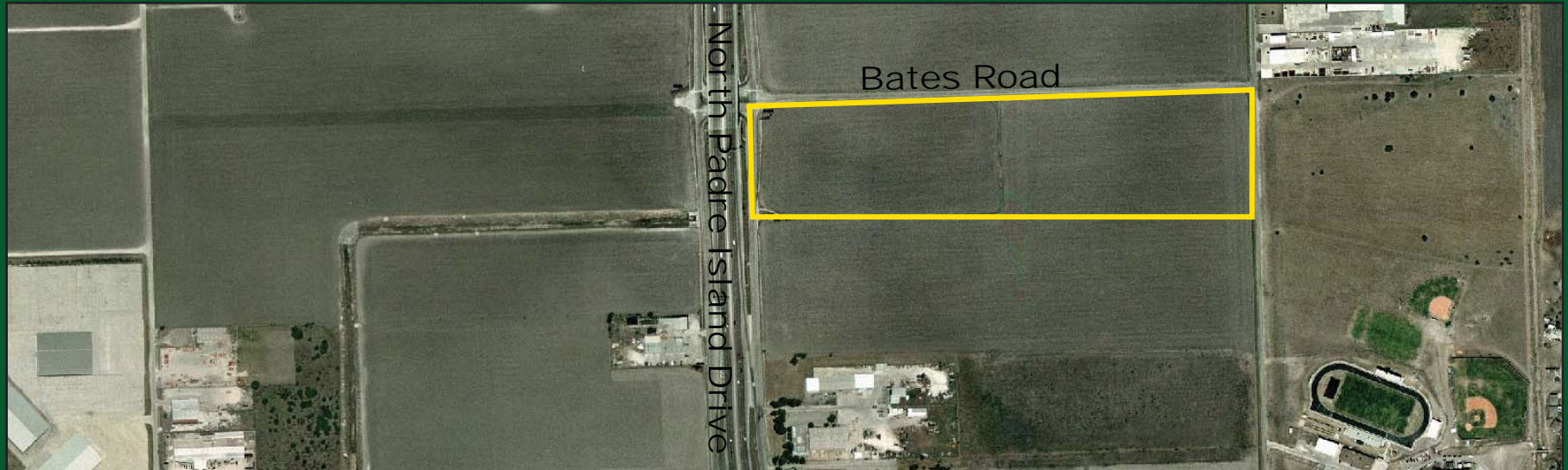
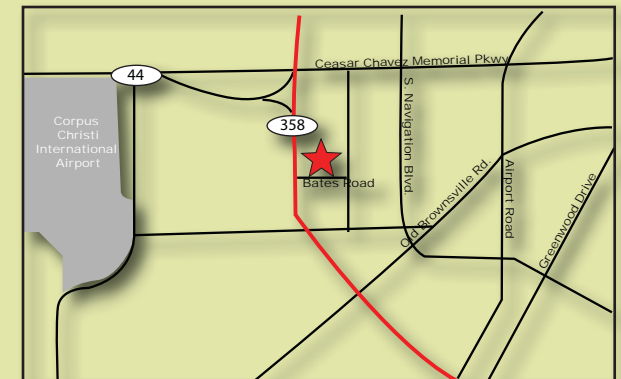


FOR SALE

COMMERCIALLY ZONED
DEVELOPMENT OPPORTUNITY
N. Padre Island Drive & Bates Rd., Corpus Christi, TX 78405



Available: Approximately 30.612 acres
Price: \$1.75/SF
Zoning: I-2
Legal Description: Russell Farm Blks 30.612 Acs Out of Lts 1A & 2A Blk 4 Tr 2
Comments: Industrial zoned tract of land located at the corner of NPID & Bates Road



Joe Adame & Associates, Inc.
FULL SERVICE COMMERCIAL & INDUSTRIAL REAL ESTATE

www.joeadame.com

For more information please contact:

Mark Adame, CCIM
361-880-5888
mark@joeadame.com

Full Service Commercial and Industrial Real Estate

- ◆ Land
- ◆ Retail
- ◆ Industrial
- ◆ Investment
- ◆ Office

The information contained herein has been obtained from sources we deem reliable. We have no reason to doubt its accuracy, but we do not guarantee it.