

# FOR SALE

COMMERCIALLY ZONED  
DEVELOPMENT OPPORTUNITY

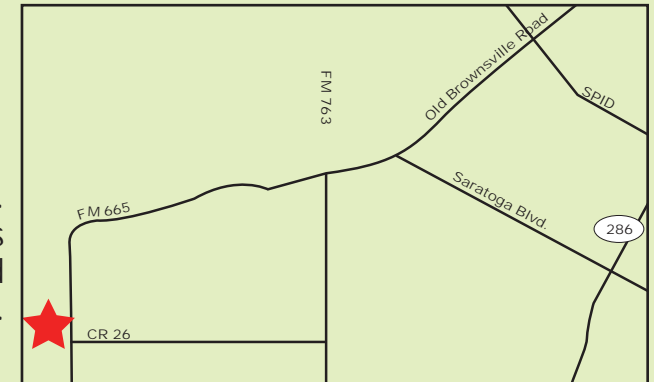
FM 665 (Old Brownsville Rd.) at CR 26, Corpus Christi, TX 78380

Price  
Reduced



Available: Approximately 211.711 acres of farm and ranch land available  
Zoning: Farm/Ranch  
Price: \$1,588,000 (\$7,500/acre)  
Legal Description: Assessors map 152 211.711 acres out of TR 10  
Comments: Gently rolling acres of improved pasture land available for prime development. Located at the beginning of West Oso Creek, this horse/cattle ranch offers grass covered pastures, fenced and cross fenced with horse stables, 3 water taps and a well. Located seven (7) miles from SPID on Old Brownsville Road (FM 665). Great potential for future residential subdivision.

*\*Surface rights only, no mineral. **Owner Finance Available.***



**Joe Adame & Associates, Inc.**  
FULL SERVICE COMMERCIAL & INDUSTRIAL REAL ESTATE

[www.joeadame.com](http://www.joeadame.com)

*For more information please contact:*

**Bill Odom**  
361-880-5888  
[wodom@joeadame.com](mailto:wodom@joeadame.com)

Full Service Commercial and Industrial Real Estate

◆ Land ◆ Retail ◆ Industrial ◆ Investment ◆ Office

*The information contained herein has been obtained from sources we deem reliable. We have no reason to doubt its accuracy, but we do not guarantee it.*

# FOR SALE

FM 665 (Old Brownsville Rd.) at CR26, Corpus Christi, TX 78380



**Joe Adame & Associates, Inc.**  
FULL SERVICE COMMERCIAL & INDUSTRIAL REAL ESTATE

[www.joeadame.com](http://www.joeadame.com)

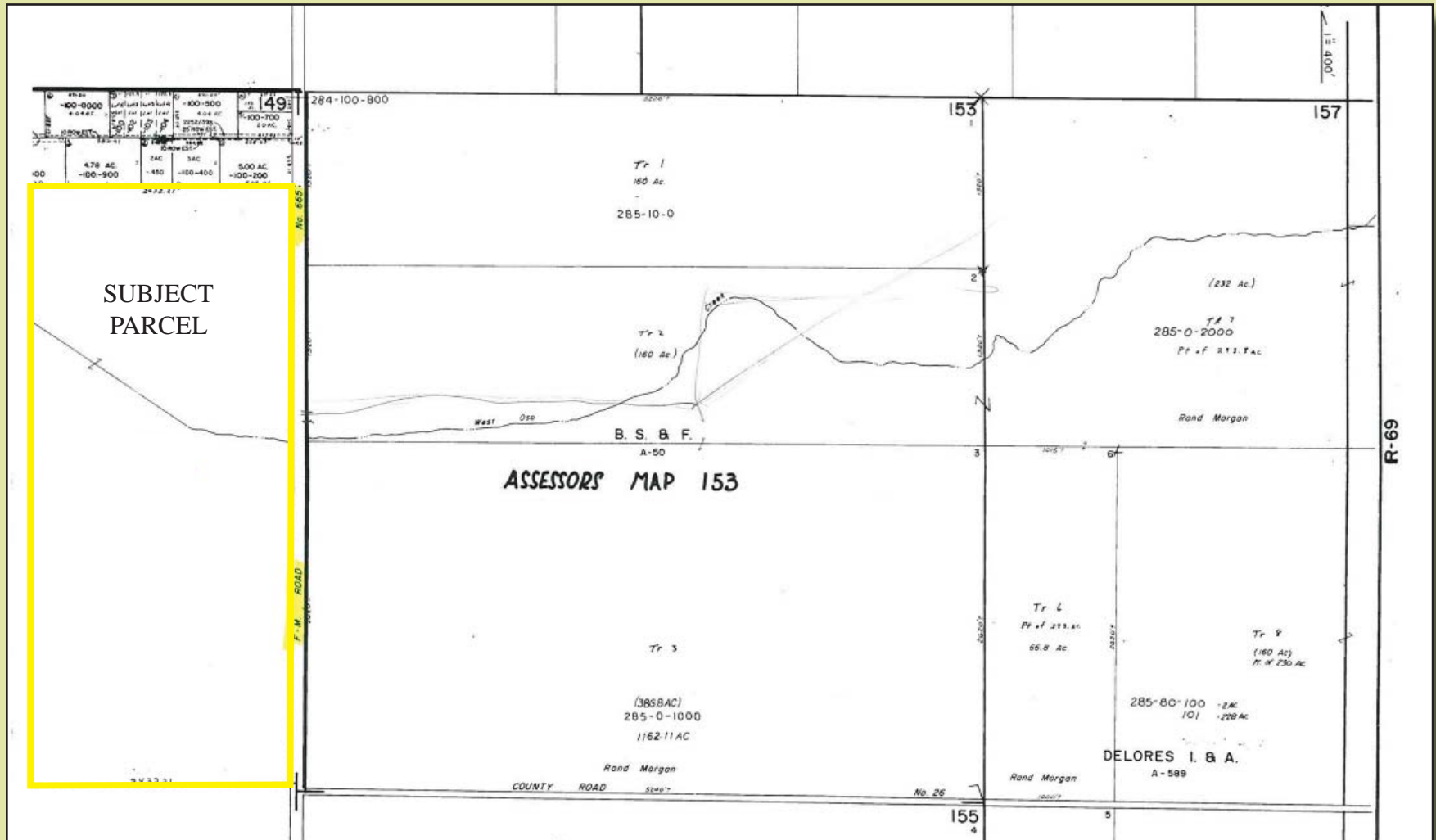
*For more information please contact:*

**Bill Odom**  
361-880-5888  
[wodom@joeadame.com](mailto:wodom@joeadame.com)

4550 Corona Drive, Corpus Christi, Texas 78411 Phone: 361-880-5888 Fax: 361-880-5883 [www.joeadame.com](http://www.joeadame.com)

FOR SALE

FM 665 (Old Brownsville Rd.) at CR26, Corpus Christi, TX 78380



Joe Adame & Associates, Inc.  
FULL SERVICE COMMERCIAL & INDUSTRIAL REAL ESTATE

www.joeadame.com

For more information please contact:

Bill Odom  
361-880-5888

wodom@joeadame.com

4550 Corona Drive, Corpus Christi, Texas 78411 Phone: 361-880-5888 Fax: 361-880-5883 www.joeadame.com

# FOR SALE

FM 665 (Old Brownsville Rd.) at CR26, Corpus Christi, TX 78380



**Joe Adame & Associates, Inc.**  
FULL SERVICE COMMERCIAL & INDUSTRIAL REAL ESTATE

[www.joeadame.com](http://www.joeadame.com)

*For more information please contact:*

**Bill Odom**  
361-880-5888  
[wodom@joeadame.com](mailto:wodom@joeadame.com)

4550 Corona Drive, Corpus Christi, Texas 78411 Phone: 361-880-5888 Fax: 361-880-5883 [www.joeadame.com](http://www.joeadame.com)