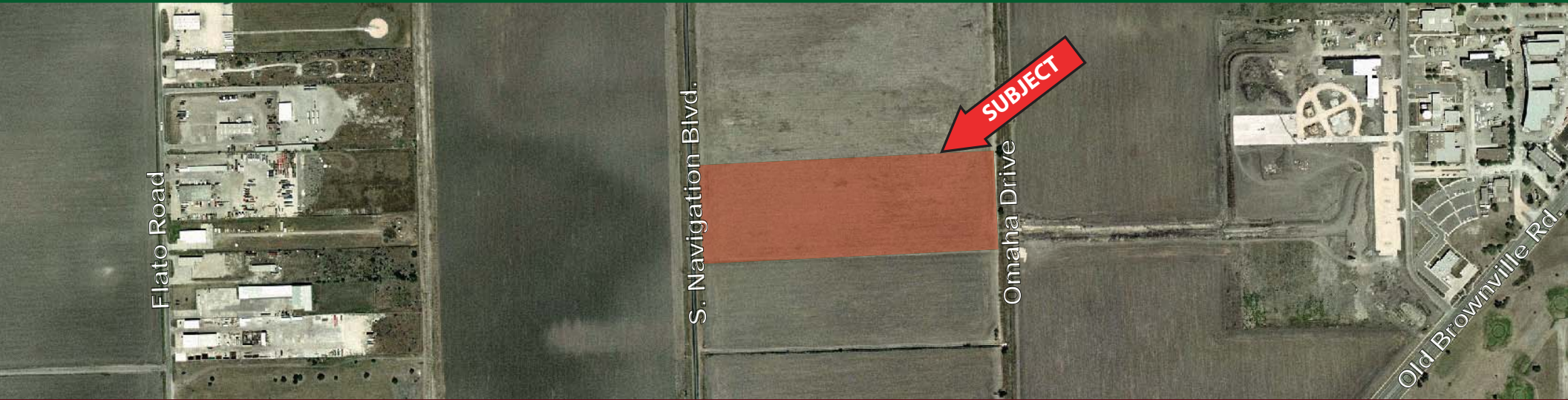
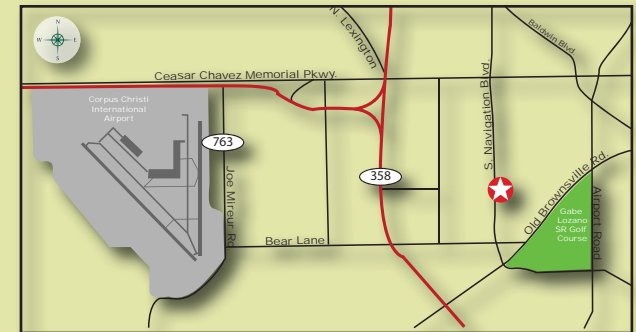


FOR SALE

COMMERCIALLY ZONED
DEVELOPMENT OPPORTUNITY
915 South Navigation Blvd., Corpus Christi, TX 78408



Available: 19.632 acres (855,183 SF) vacant land
Price: \$513,000
Zoning: I-2
Legal Description: Russell Farm Blocks 19.632 Acs out of TR 8A, Blk 10
Comments: 19.632 acres of unplatted land which must conform to City of Corpus Christi Platting Ordinance. Lot has approximately 560 feet of frontage on Navigation Blvd. and 1,524 feet deep. Property is located on the East side of Navigation between Agnes and Old Brownsville Road, near Bear Lane. Currently has agriculture exemption.



Joe Adame & Associates, Inc.
FULL SERVICE COMMERCIAL & INDUSTRIAL REAL ESTATE

www.joadame.com

For more information please contact:

Mark Adame, SIOR, CCIM

361-880-5888

mark@joadame.com

Jason Alaniz

361-880-5888

jason@joadame.com

Full Service Commercial and Industrial Real Estate

◆ Land ◆ Retail ◆ Industrial ◆ Investment ◆ Office

The information contained herein has been obtained from sources we deem reliable. We have no reason to doubt its accuracy, but we do not guarantee it.

FOR SALE

915 S. Navigation Blvd., Corpus Christi, TX 78408



Joe Adame & Associates, Inc.

For more information please contact:

Mark Adame, SIOR, CCIM **Jason Alaniz**

361-880-5888

361-880-5888

mark@joeadame.com

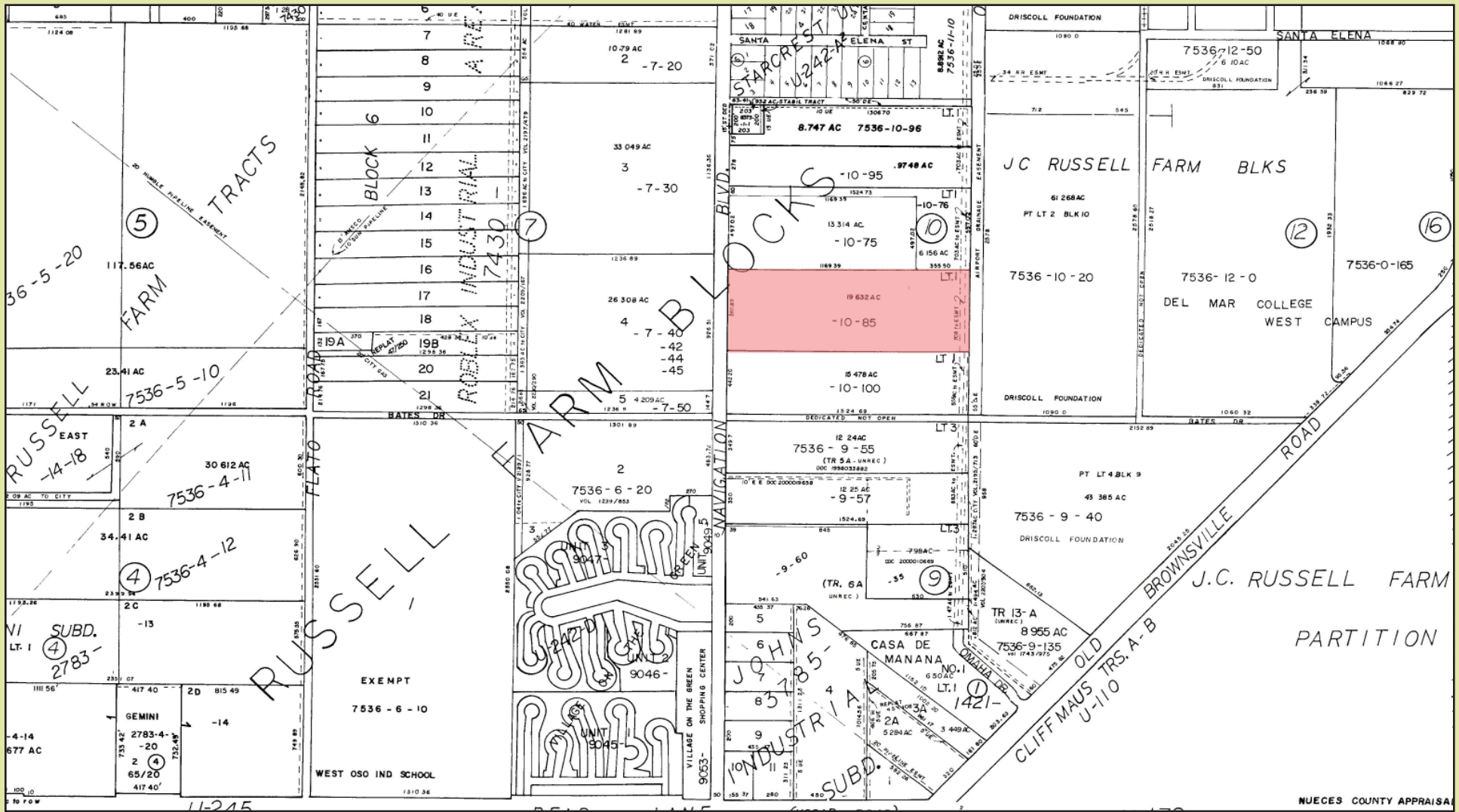
jason@joeadame.com

www.joeadame.com

4550 Corona Drive, Corpus Christi, Texas 78411 Phone: 361-880-5888 Fax: 361-880-5883 www.joeadame.com

FOR SALE

915 S. Navigation Blvd., Corpus Christi, TX 78408



Joe Adame & Associates, Inc.

For more information please contact:

Mark Adame, SIOR, CCIM **Jason Alaniz**

361-880-5888

361-880-5888

mark@joeadame.com

jason@joeadame.com

www.joeadame.com

4550 Corona Drive, Corpus Christi, Texas 78411 Phone: 361-880-5888 Fax: 361-880-5883 www.joeadame.com