

# FOR SUBLEASE

Office Space Available

One Shoreline Plaza, 800 N. Shoreline Blvd., Suite 1000 N, Corpus Christi, TX 78401



Available:

Class "A" office suite, approximately 4,483 SF (Suite 1000 N), located in One Shoreline Plaza (Building size: 363,302 SF)

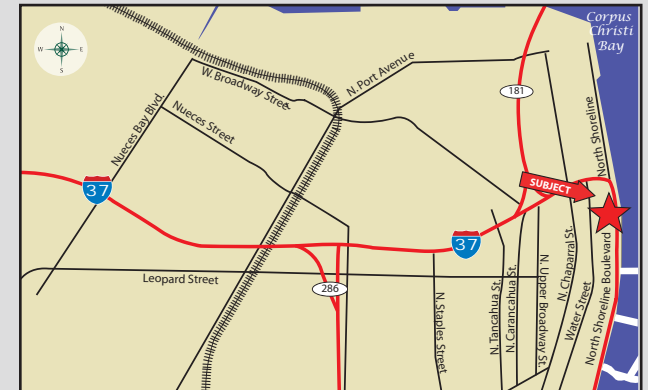
Price:

~~\$6,919 monthly - 18.52/SF (includes base rent and operating expenses)~~

**\$4,500 monthly Full Service**

Comments:

Professional office conveniently located in One Shoreline Plaza, in the heart of Corpus Christi's CBD. This location has ease of in and out of downtown, reserved and unreserved parking spaces, comfortable break room, conference room just off of reception area. Incredible bay and marina views sides. Full service amenities include dining options, The Town Club, on-site security, Ten (10) unreserved parking spaces with additional available at building rates.



**Joe Adame & Associates, Inc.**  
FULL SERVICE COMMERCIAL & INDUSTRIAL REAL ESTATE

[www.joeadame.com](http://www.joeadame.com)

*For more information please contact:*

**Will Douglas, CCIM, SIOR**

361-880-5888

361-549-1913 cell

[wdouglas@ccim.net](mailto:wdouglas@ccim.net)

Full Service Commercial and Industrial Real Estate

◆ Land ◆ Retail ◆ Industrial ◆ Investment ◆ Office

*The information contained herein has been obtained from sources we deem reliable. We have no reason to doubt its accuracy, but we do not guarantee it.*

# FOR SUBLEASE

800 N. Shoreline Blvd., Suite 1000 N, Corpus Christi, TX 78401

## Office Photographs



Joe Adame & Associates, Inc.  
www.joadame.com

*For more information please contact:*

**Will Douglas, CCIM, SIOR**

361-880-5888

361-549-1913 cell

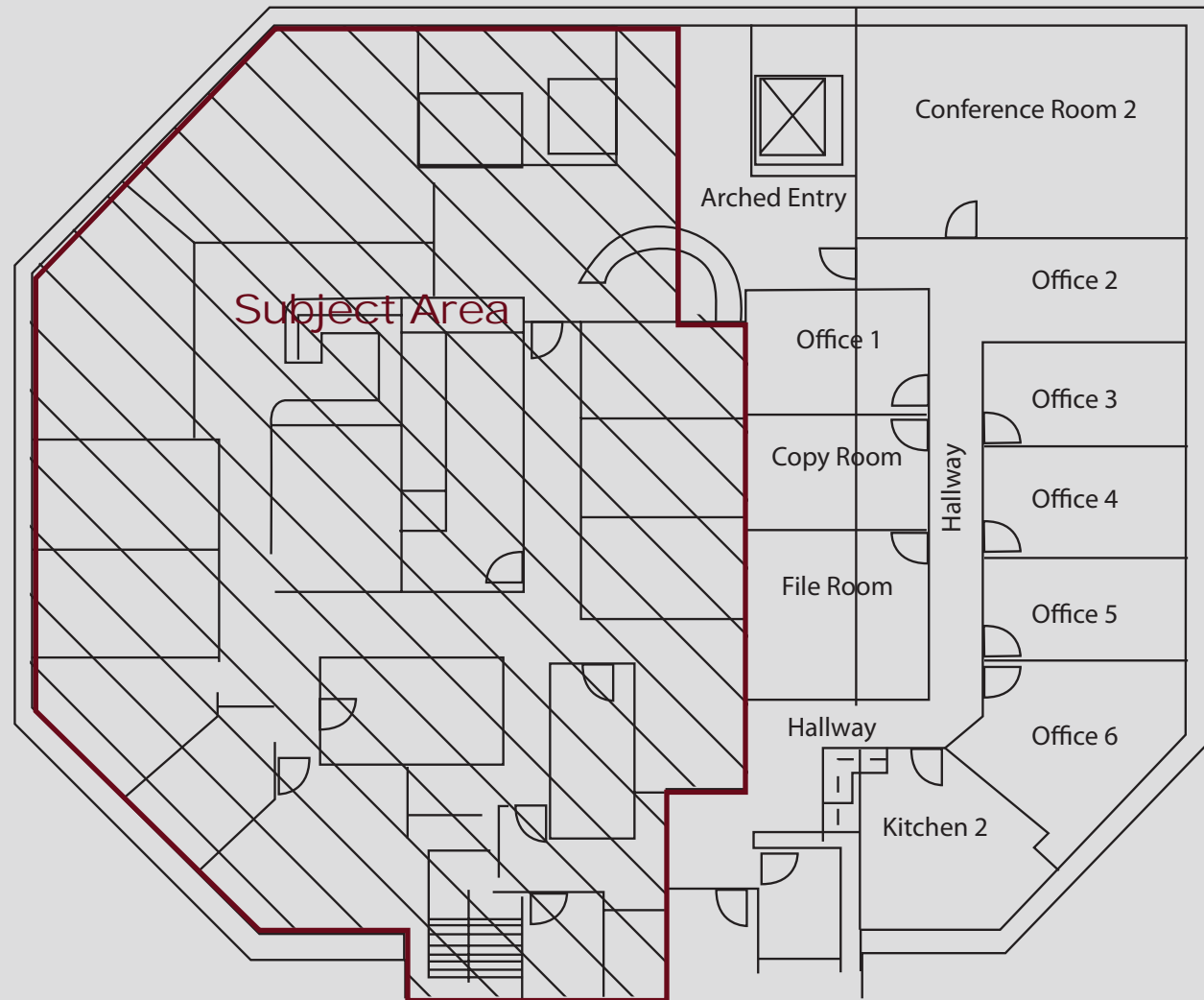
*wdouglas@ccim.net*

4550 Corona Drive, Corpus Christi, Texas 78411 Phone: 361-880-5888 Fax: 361-880-5883

# FOR SUBLEASE

800 N. Shoreline Blvd., Suite 1000 N, Corpus Christi, TX 78401

## Floor Plan



*For more information please contact:*

**Will Douglas, CCIM, SIOR**

361-880-5888

361-549-1913 cell

[wdouglas@ccim.net](mailto:wdouglas@ccim.net)

4550 Corona Drive, Corpus Christi, Texas 78411 Phone: 361-880-5888 Fax: 361-880-5883



**Joe Adame & Associates, Inc.**  
[www.joeadame.com](http://www.joeadame.com)

# FOR SUBLEASE

800 N. Shoreline Blvd., Suite 1000 N, Corpus Christi, TX 78401

## Location



For more information please contact:

**Will Douglas, CCIM, SIOR**

361-880-5888

361-549-1913 cell

[wdouglas@ccim.net](mailto:wdouglas@ccim.net)

4550 Corona Drive, Corpus Christi, Texas 78411 Phone: 361-880-5888 Fax: 361-880-5883



Joe Adame & Associates, Inc.  
[www.joeadame.com](http://www.joeadame.com)