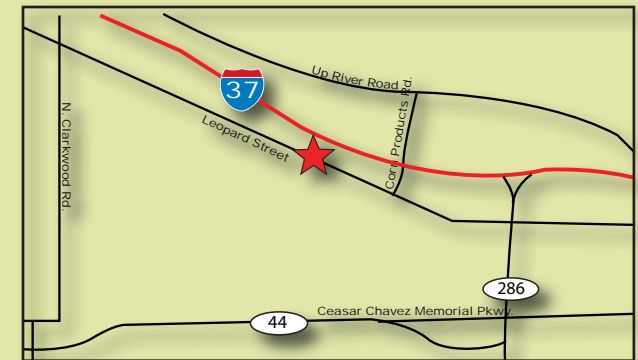


# FOR SALE

COMMERCIALLY ZONED  
DEVELOPMENT OPPORTUNITY  
6941 Leopard Street, Corpus Christi, TX 78409



Available: Approximately 78,844 SF (1.81 acres)  
Price: \$100,000  
Zoning: I-2  
Legal Description: Allen & Cameron Ind Prk #2 Lt 2  
Comments: Roughly 100' frontage on Leopard Street and 145' frontage on Southern Minerals Road. Ideal industrial land located in the primary oilfield and refinery service sector of Corpus Christi.



**Joe Adame & Associates, Inc.**  
FULL SERVICE COMMERCIAL & INDUSTRIAL REAL ESTATE

[www.joadame.com](http://www.joadame.com)

*For more information please contact:*

**Mark Adame, CCIM, SIOR**

361-880-5888

[mark@joeadame.com](mailto:mark@joeadame.com)

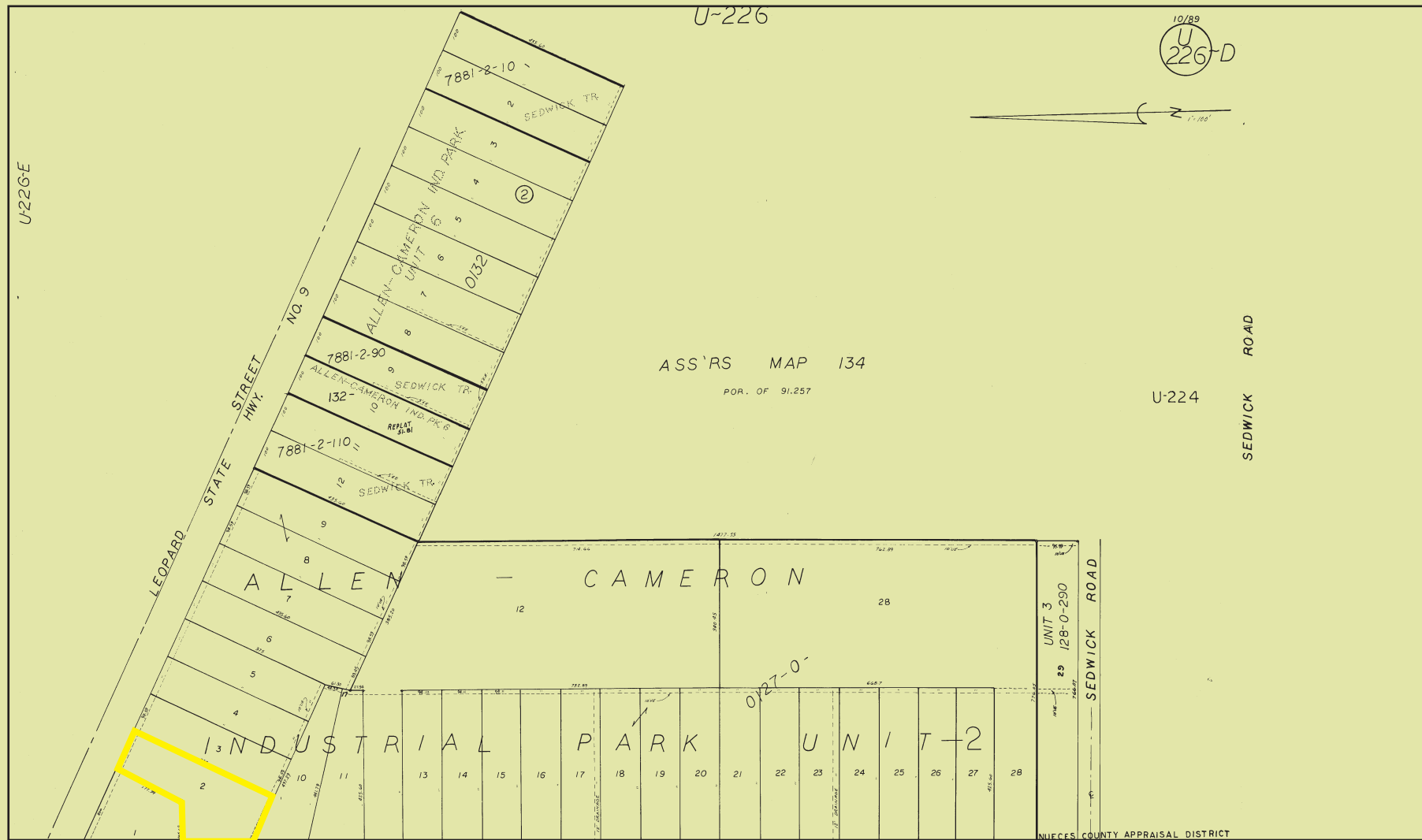
Full Service Commercial and Industrial Real Estate

◆ Land ◆ Retail ◆ Industrial ◆ Investment ◆ Office

*The information contained herein has been obtained from sources we deem reliable. We have no reason to doubt its accuracy, but we do not guarantee it.*

# FOR SALE

# 6941 Leopard Street, Corpus Christi, TX 78405



**Joe Adame & Associates, Inc.**  
FULL SERVICE COMMERCIAL & INDUSTRIAL REAL ESTATE

[www.joeadame.com](http://www.joeadame.com)

*For more information please contact:*

**Mark Adame, CCIM, SIOR**

361-880-5888

[mark@joeadame.com](mailto:mark@joeadame.com)

4550 Corona Drive, Corpus Christi, Texas Telephone: 361.880.5888 Facsimile: 361.880.5883