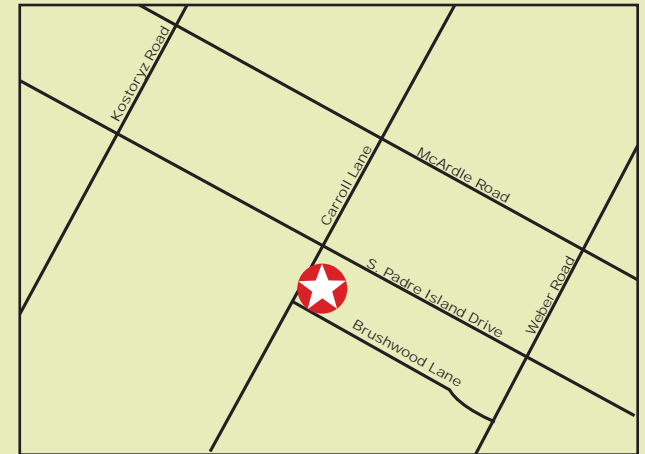


# FOR SALE OR LEASE

RETAIL OPPORTUNITY  
5134 Carroll Lane, Corpus Christi, TX 78415



Size: Restaurant space available for sale or lease - 3,938 SF  
Land: 29,820 SF  
Zoning: B-4  
Legal Description: LEXINGTON PLAZA LTS 39 40 & 41 BK D  
Price: \$550,000.00  
Lease Rate: \$5,000 NNN/monthly  
Comments: Former Kobe Restaurant available. Located just off SPID with excellent visibility. Very established restaurant location in the primary retail corridor of Corpus Christi. High traffic Counts.



**Joe Adame & Associates, Inc.**  
FULL SERVICE COMMERCIAL & INDUSTRIAL REAL ESTATE

[www.joadame.com](http://www.joadame.com)

*For more information please contact:*

**Mark Adame, CCIM, SIOR**

361-880-5888

[mark@joeadame.com](mailto:mark@joeadame.com)

Full Service Commercial and Industrial Real Estate

◆ Land ◆ Retail ◆ Industrial ◆ Investment ◆ Office

*The information contained herein has been obtained from sources we deem reliable. We have no reason to doubt its accuracy, but we do not guarantee it.*

# FOR SALE OR LEASE

5134 Carroll Lane, Corpus Christi, TX 78415

## Photos



Joe Adame & Associates, Inc.  
www.joadame.com

*For more information please contact:*

**Mark Adame, CCIM, SIOR**

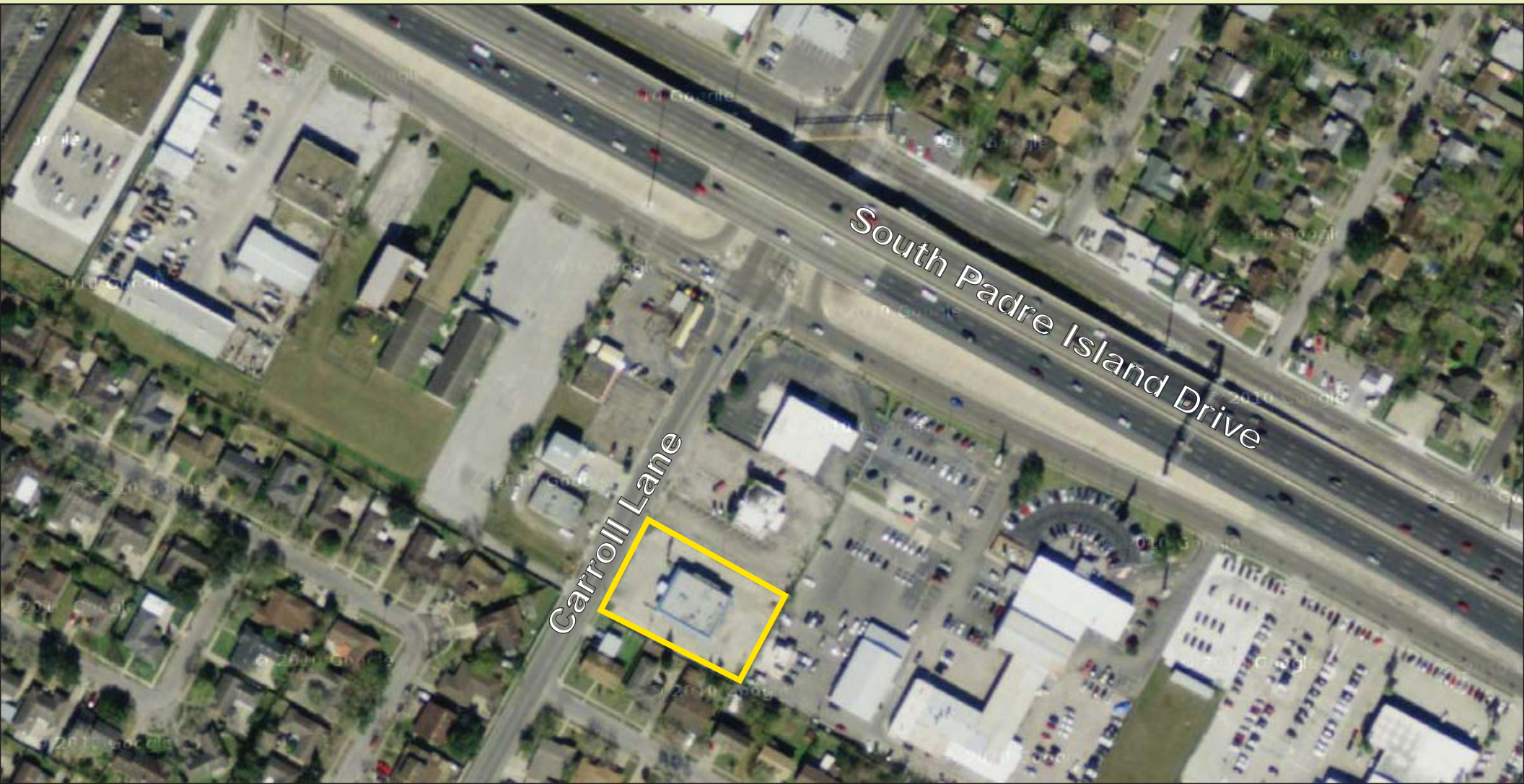
361-880-5888

*mark@joeadame.com*

*4550 Corona Drive, Corpus Christi, Texas 78411 Phone: 361-880-5888 Fax: 361-880-5883*

FOR SALE OR LEASE

5134 Carroll Lane, Corpus Christi, TX 78415



Joe Adame & Associates, Inc.  
www.joeadame.com

*For more information please contact:*

**Mark Adame, CCIM, SIOR**

361-880-5888

*mark@joeadame.com*

4550 Corona Drive, Corpus Christi, Texas 78411 Phone: 361-880-5888 Fax: 361-880-5883