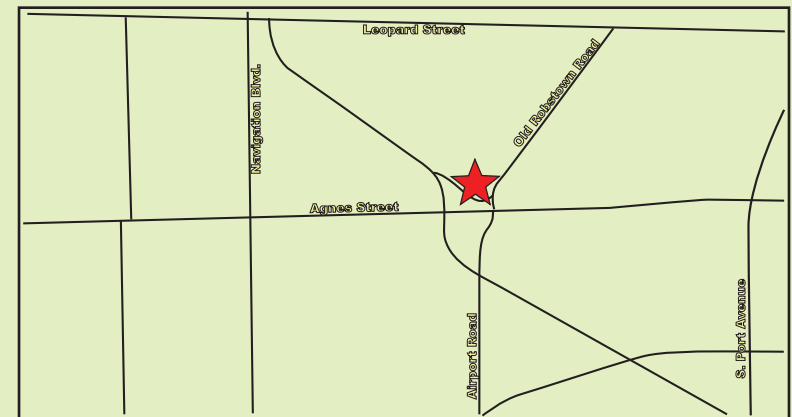


FOR SALE

COMMERCIALLY ZONED
DEVELOPMENT OPPORTUNITY
4140 Russell Drive, Corpus Christi, TX 78408



Size: Approximately 20,000 SF
Price: \$68,000.00
Zoning: I-2
Legal Description: RUSSELL INDUSTRIAL LOTS 7 & 8, BLOCK 5-A, CITY OF CORPUS CHRISTI
Comments: Two 10,000 SF undeveloped lots combined for approximately .459 acres with frontage on Russell Drive. Located in Corpus Christi's industrial area. Great build-to-suit opportunity. This property has all utilities.



Joe Adame & Associates, Inc.
FULL SERVICE COMMERCIAL & INDUSTRIAL REAL ESTATE

www.joeadame.com

For more information please contact:

Joe Adame, CCIM, SIOR, CRE
361-880-5888
joe@joeadame.com

Full Service Commercial and Industrial Real Estate

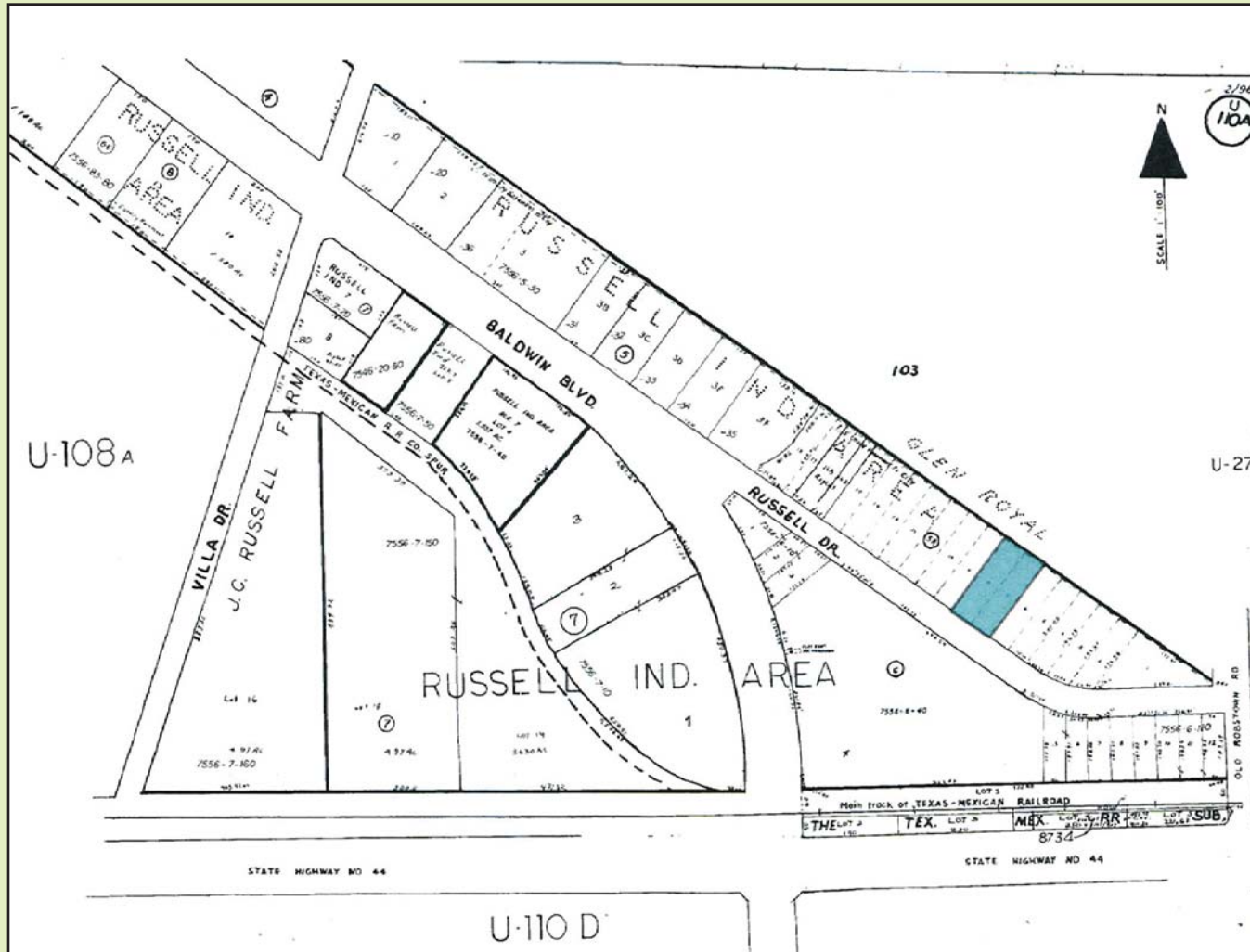
◆ Land ◆ Retail ◆ Industrial ◆ Investment ◆ Office

The information contained herein has been obtained from sources we deem reliable. We have no reason to doubt its accuracy, but we do not guarantee it.

FOR SALE

4140 Russell Drive, Corpus Christi, Texas 78408

Plat



For more information please contact:

Joe Adame, CCIM, SIOR, CRE

361-880-5888

joe@joeadame.com



Joe Adame & Associates, Inc.

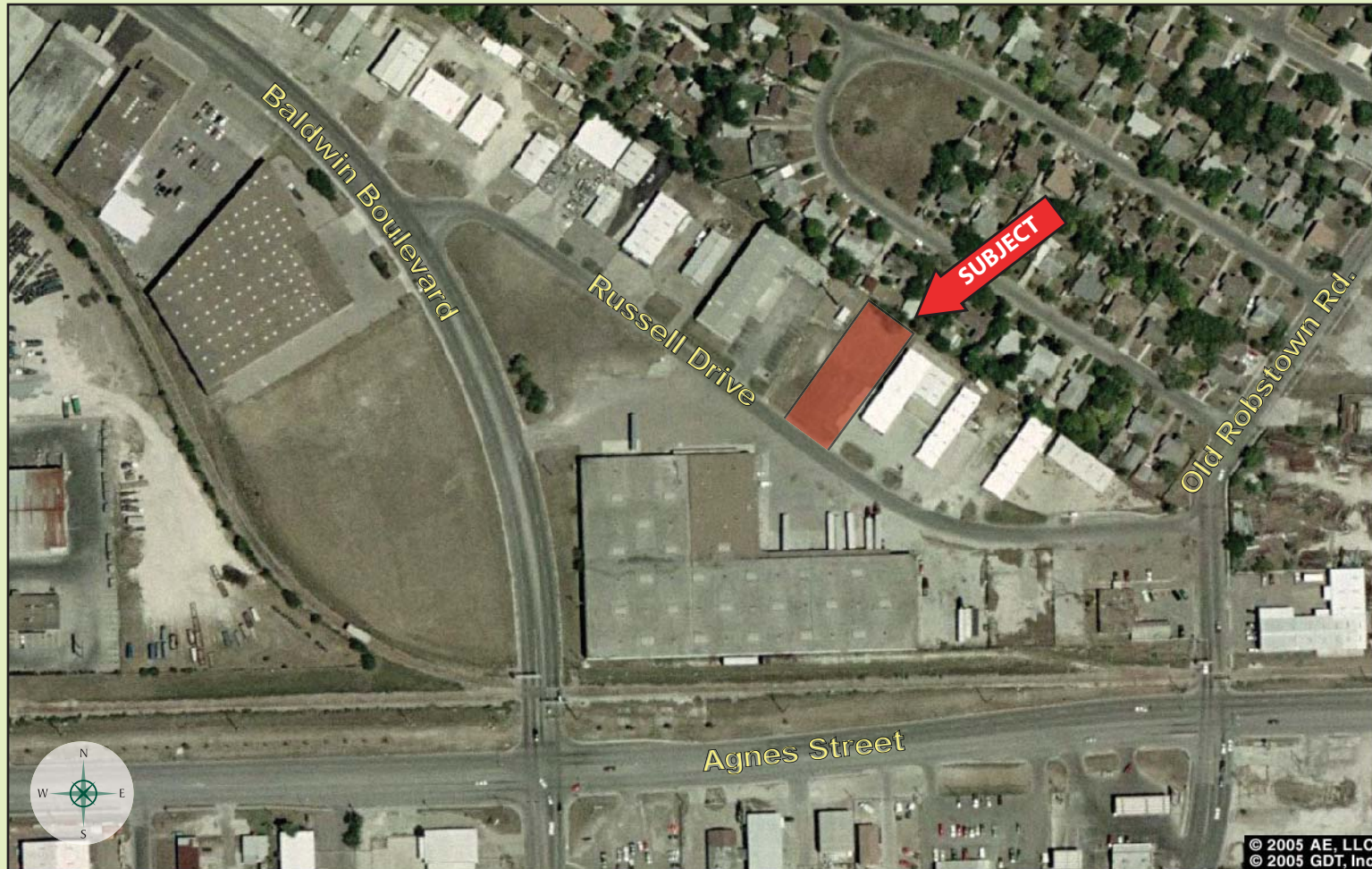
www.joeadame.com

One Shoreline Plaza, Suite 1000N, 800 North Shoreline Blvd., Corpus Christi, Texas 78401 Phone: 361-880-5888 Fax: 361-880-5883

FOR SALE

4140 Russell Drive, Corpus Christi, Texas 78408

Aerial



For more information please contact:

Joe Adame, CCIM, SIOR, CRE

361-880-5888

joe@joeadame.com



Joe Adame & Associates, Inc.

www.joeadame.com

One Shoreline Plaza, Suite 1000N, 800 North Shoreline Blvd., Corpus Christi, Texas 78401 Phone: 361-880-5888 Fax: 361-880-5883