

FOR SALE

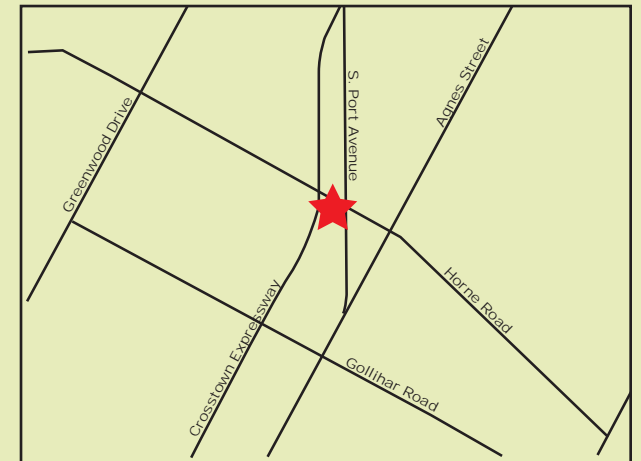
RETAIL OPPORTUNITY
4121 S. Port Avenue, Corpus Christi, TX 78415



Size: Land Area: 3.05 paved acres; Building Area: 10,960 SF

Sales Price: \$1,200,000.00

Comments: Prime retail or redevelopment opportunity on the Crosstown Expressway. The property is ideal for restaurant or retail use with excellent visibility on the Crosstown Expressway. Access to the site is via Crosstown Expressway as well as Port Avenue. Ample parking and excellent signage available.



Joe Adame & Associates, Inc.
FULL SERVICE COMMERCIAL & INDUSTRIAL REAL ESTATE

www.joadame.com

For more information please contact:

Mark Adame, CCIM, SIOR

361-880-5888

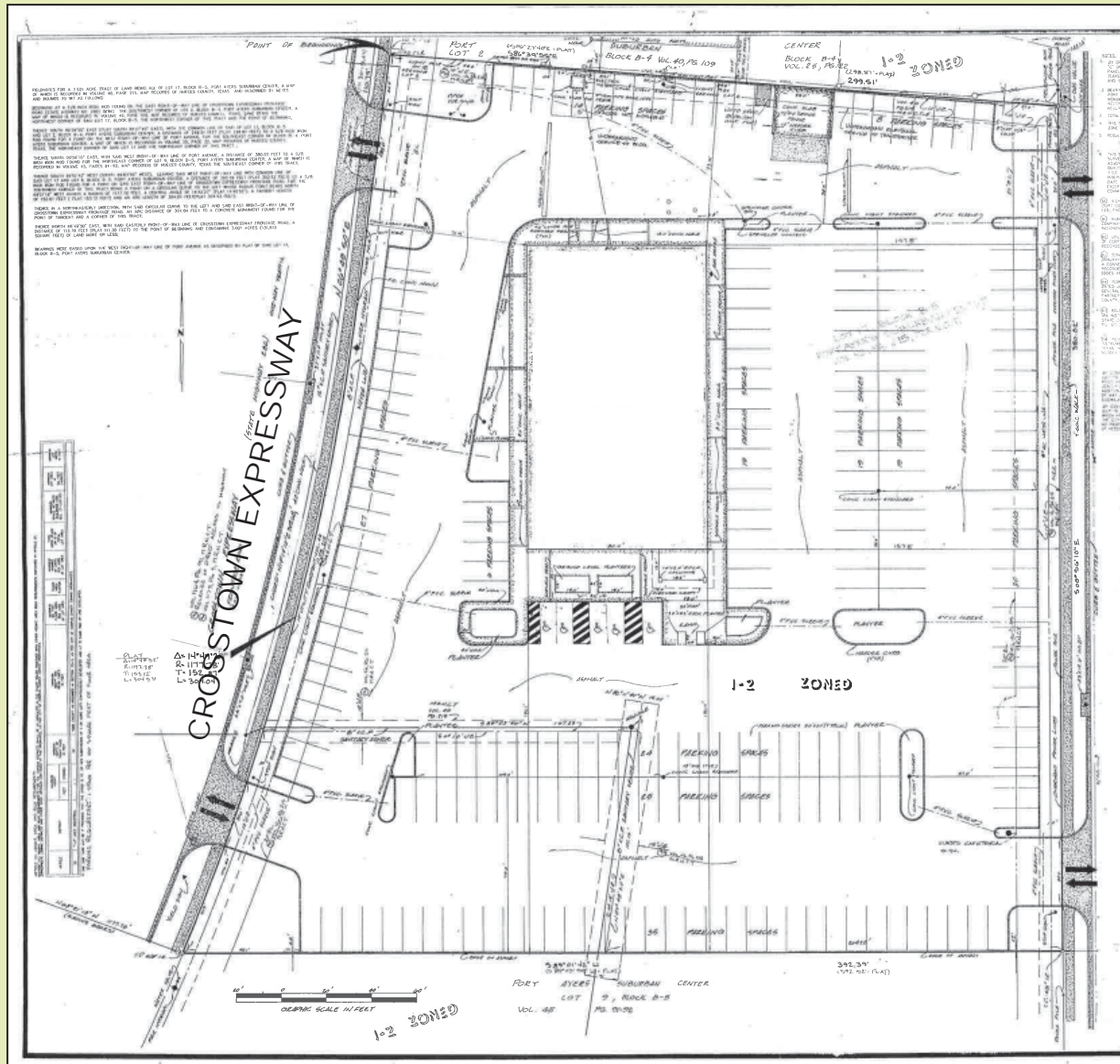
mark@joadame.com

Full Service Commercial and Industrial Real Estate

◆ Land ◆ Retail ◆ Industrial ◆ Investment ◆ Office

The information contained herein has been obtained from sources we deem reliable. We have no reason to doubt its accuracy, but we do not guarantee it.

Site Plan



Joe Adame & Associates, Inc.
www.joadame.com

Mark Adame, CCIM, SIOR

361-880-5888

mark@joeadame.com

4550 Corona Drive, Corpus Christi, Texas 78411 Phone: 361-880-5888 Fax: 361-880-5883

FOR SALE

4121 S. Port Avenue, Corpus Christi, TX 78415

BUILDING PHOTOS



Joe Adame & Associates, Inc.
www.joadame.com

For more information please contact:

Mark Adame, CCIM, SIOR

361-880-5888

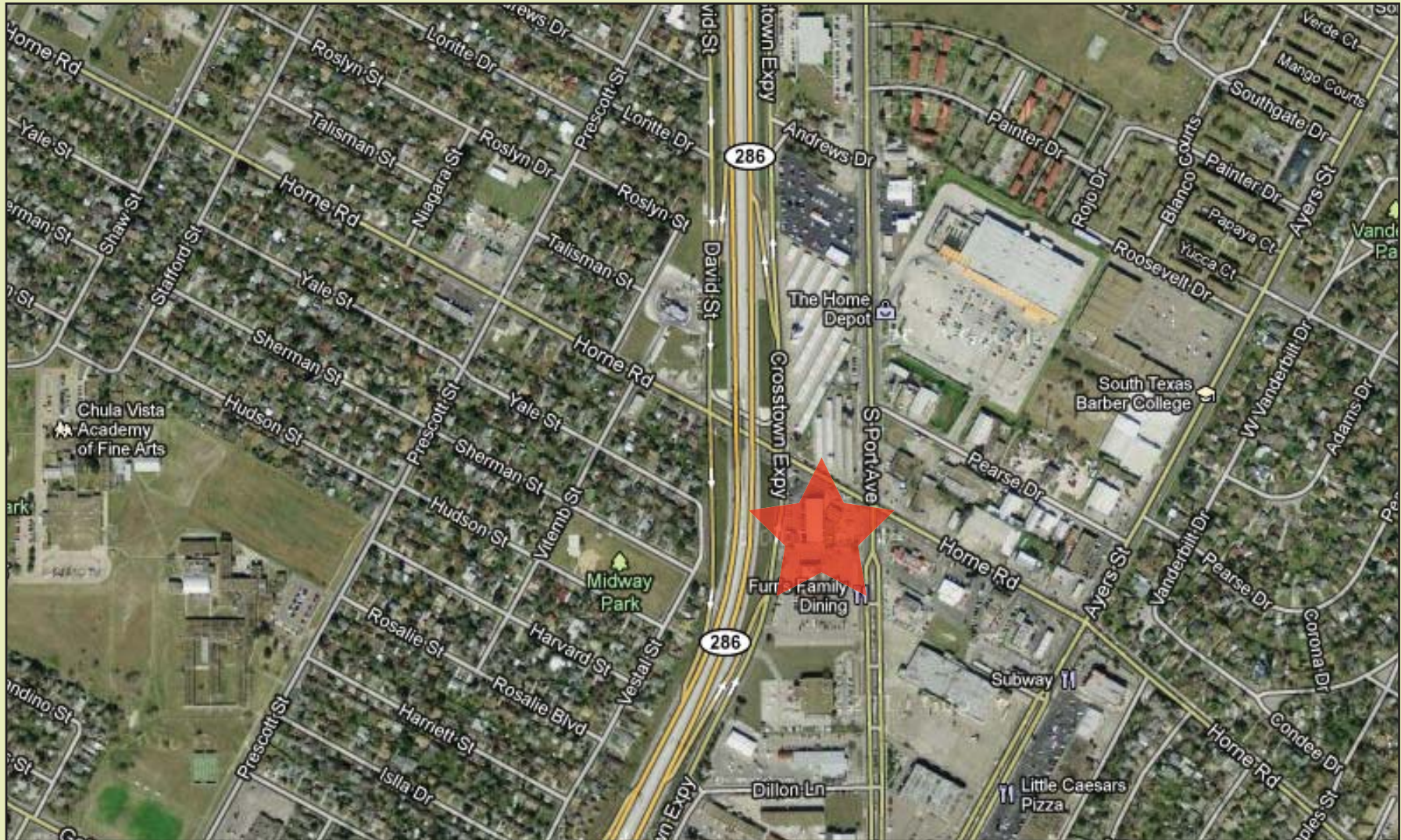
mark@joeadame.com

4550 Corona Drive, Corpus Christi, Texas 78411 Phone: 361-880-5888 Fax: 361-880-5883

FOR SALE

4121 S. Port Avenue, Corpus Christi, TX 78415

Aerial



Joe Adame & Associates, Inc.
www.joadame.com

For more information please contact:

Mark Adame, CCIM, SIOR

361-880-5888

mark@joadame.com

4550 Corona Drive, Corpus Christi, Texas 78411 Phone: 361-880-5888 Fax: 361-880-5883