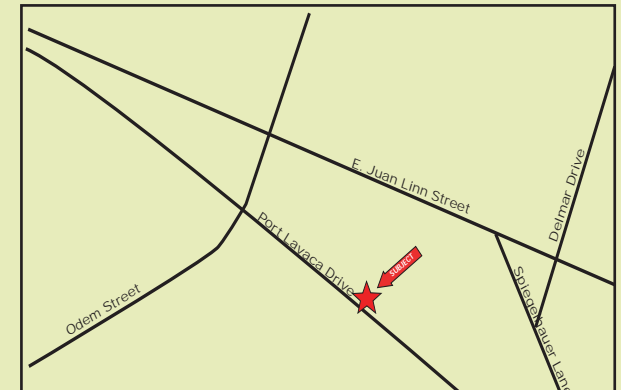


FOR SALE

Industrial Building Opportunity
3812 Port Lavaca Drive, Victoria, TX 77901



- Size:** Approximately 2.45 Acres with 2 industrial buildings (approximately 7,000 SF and 5,000 SF)
- Price:** \$299,900
- Legal Description:** BLK 2 R4 EBT (2.4466 AC) T-29 FARM-LOT 4 ACRES 2.45)
- Comments:** Located in close proximity to Highway 59, this facility offers approximately 2.45 Acres and includes 2 industrial buildings (approximately 7,000 SF and 5,000 SF), and approximately 1/2 acre of pavement.



Joe Adame & Associates, Inc.
FULL SERVICE COMMERCIAL & INDUSTRIAL REAL ESTATE

www.joeadame.com

For more information please contact:

Jason Alaniz
361-880-5888
Jason@joeadame.com

Full Service Commercial and Industrial Real Estate

◆ Land ◆ Retail ◆ Industrial ◆ Investment ◆ Office

The information contained herein has been obtained from sources we deem reliable. We have no reason to doubt its accuracy, but we do not guarantee it.

FOR SALE

3812 Port Lavaca Drive, Victoria, TX 77901



Joe Adame & Associates, Inc.
www.joadame.com

For more information please contact:

Jason Alaniz
361-880-5888
jason@joeadame.com

4550 Corona Drive, Corpus Christi, Texas 78411 Phone: 361-880-5888 Fax: 361-880-5883 www.joadame.com

FOR SALE

3812 Port Lavaca Drive, Victoria, TX 77901



Joe Adame & Associates, Inc.
www.joeadame.com

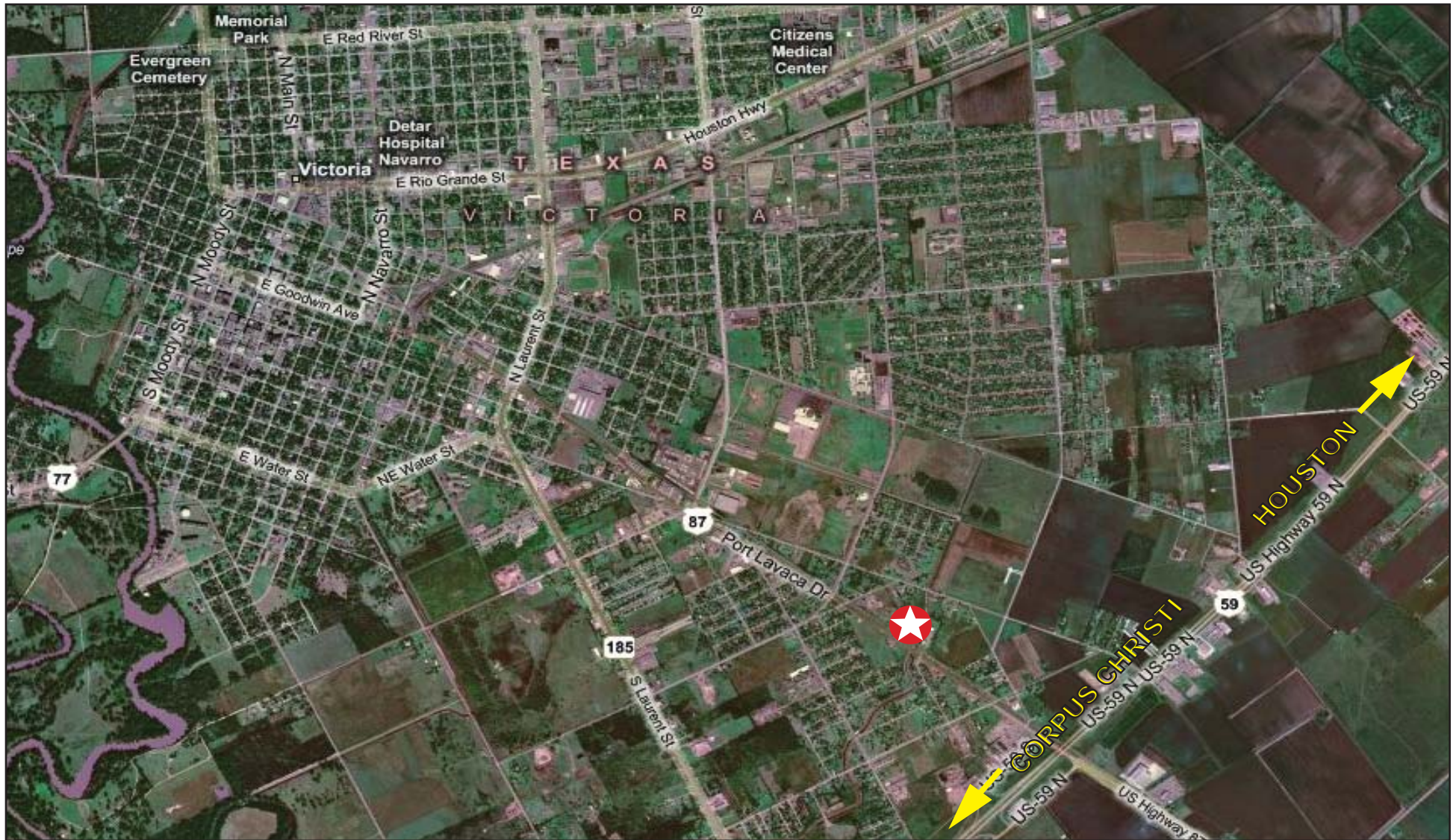
For more information please contact:

Jason Alaniz
361-880-5888
jason@joeadame.com

4550 Corona Drive, Corpus Christi, Texas 78411 Phone: 361-880-5888 Fax: 361-880-5883 www.joeadame.com

FOR SALE

3812 Port Lavaca Drive, Victoria, TX 77901



Joe Adame & Associates, Inc.
www.joeadame.com

For more information please contact:

Jason Alaniz
361-880-5888
jason@joeadame.com

4550 Corona Drive, Corpus Christi, Texas 78411 Phone: 361-880-5888 Fax: 361-880-5883 www.joeadame.com