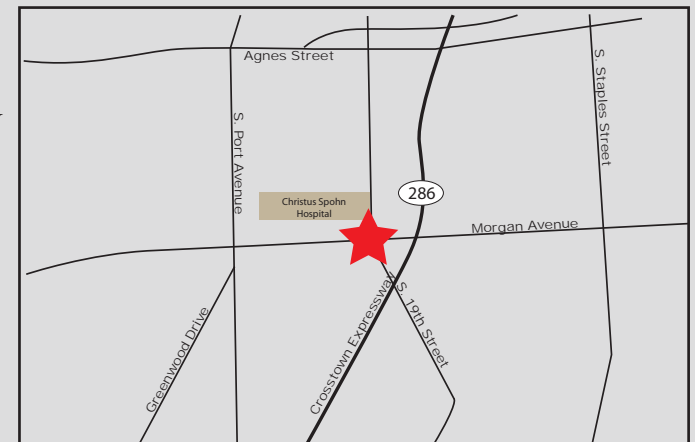


# FOR SALE

Office Space Available  
2222 Morgan Avenue, Corpus Christi, TX 78415



**Available:** 1,480 SF Office Building  
**Sale Price:** \$105,000.00  
**Legal Description:** DOCTORS SQUARE CONDO UNIT 107 & 6.25 PERCENT INT IN GCE  
**Zoning:** B-1  
**Comments:** Excellent professional medical office condo located on Morgan Avenue. Close proximity to Christus Spohn Memorial Hospital. The building fronts Hospital Boulevard.



**Joe Adame & Associates, Inc.**  
FULL SERVICE COMMERCIAL & INDUSTRIAL REAL ESTATE

[www.joadame.com](http://www.joadame.com)

*For more information please contact:*

**Mark Adame, CCIM, SIOR**  
361-880-5888  
[mark@joeadame.com](mailto:mark@joeadame.com)

Full Service Commercial and Industrial Real Estate

◆ Land ◆ Retail ◆ Industrial ◆ Investment ◆ Office

*The information contained herein has been obtained from sources we deem reliable. We have no reason to doubt its accuracy, but we do not guarantee it.*

FOR SALE

2222 Morgan Avenue, Corpus Christi, TX 78415



Joe Adame & Associates, Inc.  
www.joeadame.com

*For more information please contact:*

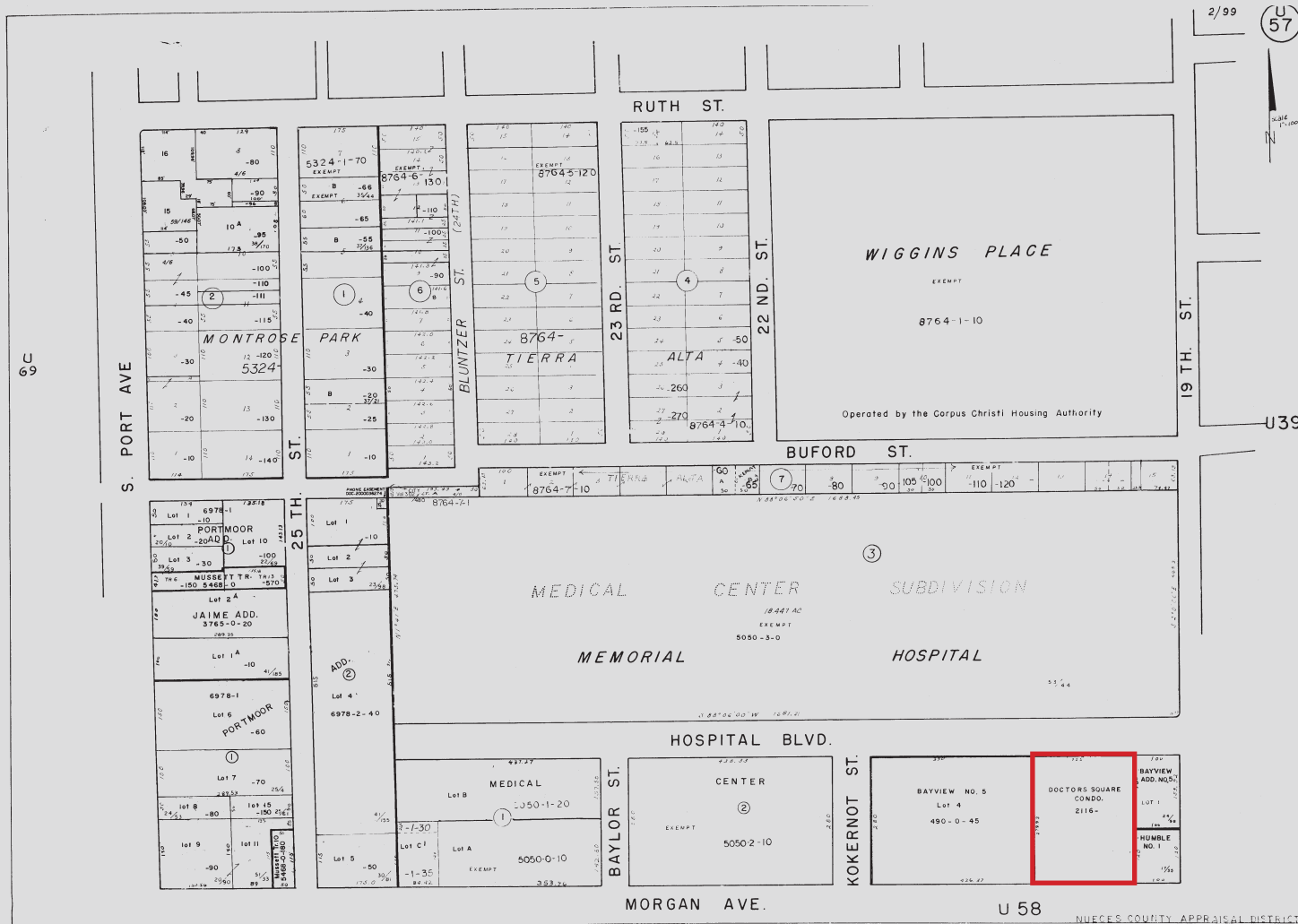
**Mark Adame, CCIM, SIOR**  
361-880-5888  
*mark@joeadame.com*

4550 Corona Drive, Corpus Christi, Texas 78411 Phone: 361-880-5888 Fax: 361-880-5883

# FOR SALE

# 2222 Morgan Avenue, Corpus Christi, TX 78415

Plat



Joe Adame & Associates, Inc.  
www.joeadame.com

For more information please contact:

Mark Adame, CCIM, SIOR  
361-880-5888  
mark@joeadame.com

4550 Corona Drive, Corpus Christi, Texas 78411 Phone: 361-880-5888 Fax: 361-880-5883