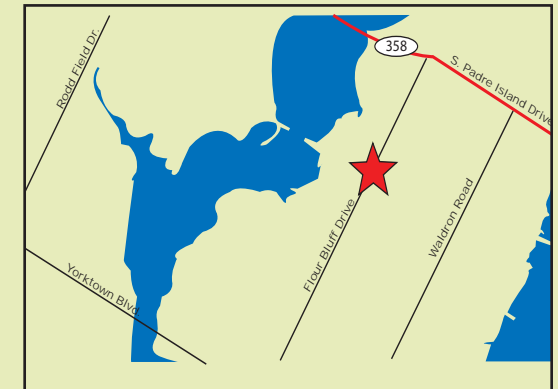


# FOR SALE

Industrial Building Investment Opportunity  
2102 Flour Bluff Drive, Corpus Christi, TX 78418



**Size:** Approximately 28,444 SF building, Land is 6.445 acres  
**Price:** \$840,000  
**Zoning:** I-2  
**Legal Description:** GREEN TREE SUBD LT 5  
**Comments:** Property has 424' of frontage on Flour Bluff Drive. Office space of 1,044 sf and warehouse space of 27,400 sf. Great property and ideal for use by a wholesale company, lumber yard or as a storage facility. Owner has full set of plans for storage facility available. Property is vacant.



**Joe Adame & Associates, Inc.**  
FULL SERVICE COMMERCIAL & INDUSTRIAL REAL ESTATE

[www.joeadame.com](http://www.joeadame.com)

*For more information please contact:*

**Mark Adame, CCIM, SIOR**  
361-880-5888  
[mark@joeadame.com](mailto:mark@joeadame.com)

Full Service Commercial and Industrial Real Estate

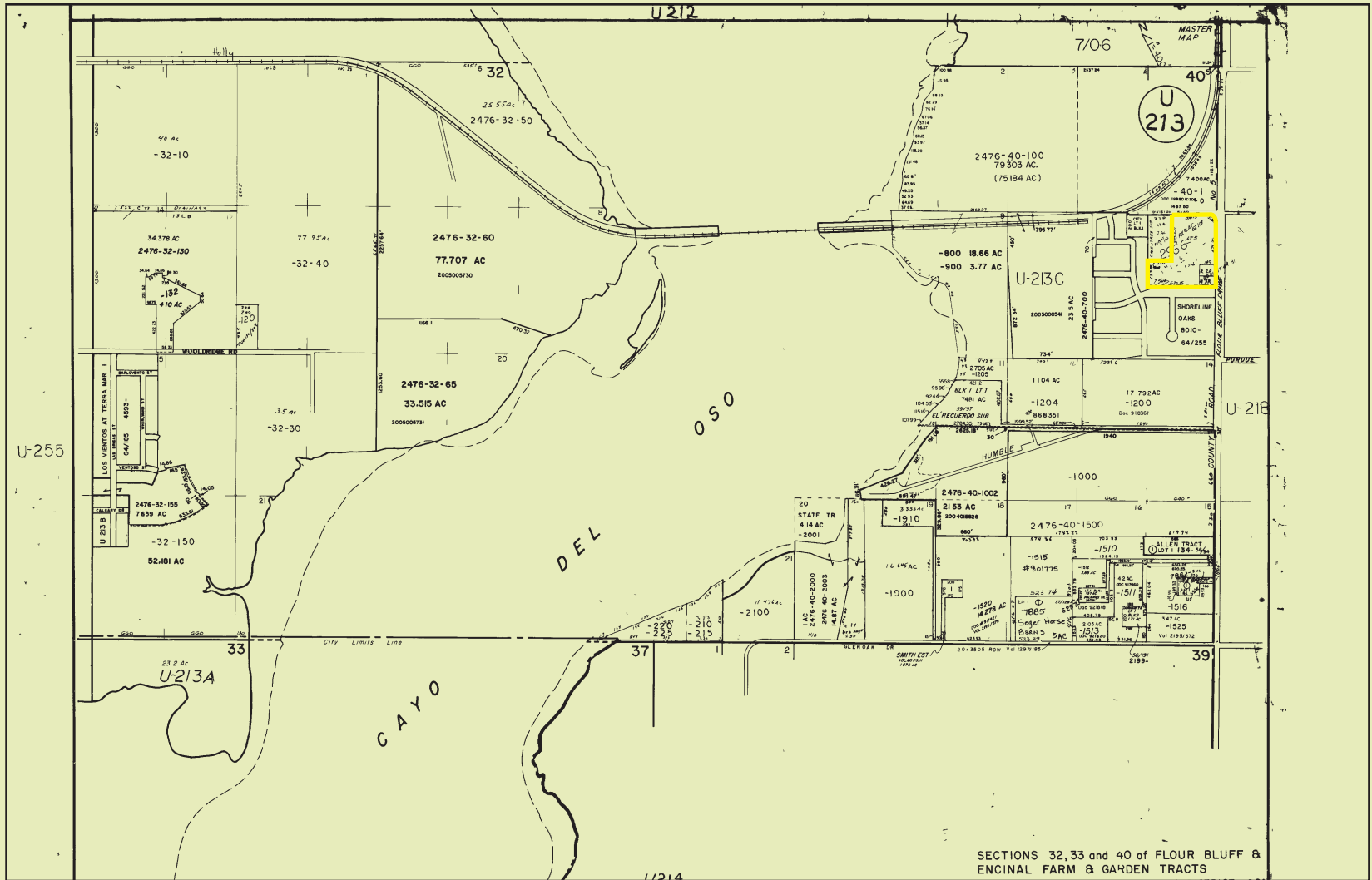
◆ Land ◆ Retail ◆ Industrial ◆ Investment ◆ Office

*The information contained herein has been obtained from sources we deem reliable. We have no reason to doubt its accuracy, but we do not guarantee it.*

FOR SALE

2102 Flour Bluff Drive, Corpus Christi, TX 78418

PLAT



For more information please contact:

Mark Adame, CCIM, SIOR

361-880-5888

mark@joeadame.com



Joe Adame & Associates, Inc.

www.joeadame.com

4550 Corona Drive, Corpus Christi, Texas 78411 Phone: 361-880-5888 Fax: 361-880-5883