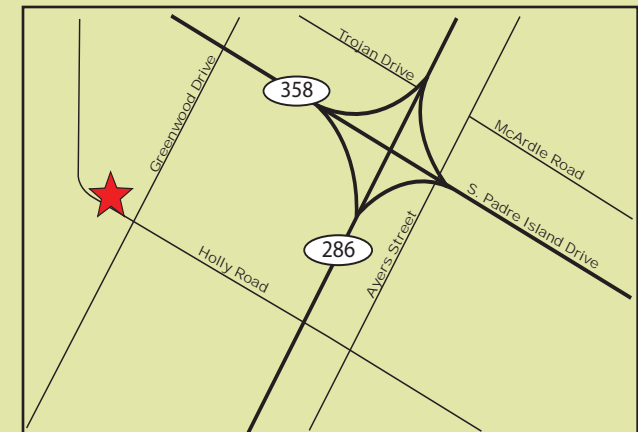


# FOR SALE

INDUSTRIAL ZONED  
WAREHOUSE PROPERTY  
1501 Holly Road, Corpus Christi, TX 78417



- Size:** Approximately 3.55 acres (154,638 SF) of vacant land. Building is 16,000 SF which includes a 2,000 SF office.
- Zoning:** I-2
- Sale Price:** \$810,000.00
- Legal Description:** LOS ENCINOS INDUSTRIAL SITES, LOT 2, BLOCK 1
- Comments:** Owner is selling a building that is approximately 16,000 SF along with adjacent vacant lot. The lot includes approx. 385' of frontage on Holly and totals approximately 3.55 acres (154,638 SF). Zoned I-2. The warehouse includes a loading dock and is fully air conditioned with roughly 2,000 SF office. Excellent access to SPID.



**Joe Adame & Associates, Inc.**  
FULL SERVICE COMMERCIAL & INDUSTRIAL REAL ESTATE

[www.joadame.com](http://www.joadame.com)

*For more information please contact:*

**Mark Adame, SIOR, CCIM**  
361-880-5888  
[mark@joeadame.com](mailto:mark@joeadame.com)

Full Service Commercial and Industrial Real Estate

◆ Land ◆ Retail ◆ Industrial ◆ Investment ◆ Office

*The information contained herein has been obtained from sources we deem reliable. We have no reason to doubt its accuracy, but we do not guarantee it.*

FOR SALE

1501 Holly Road, Corpus Christi, TX 78417



**Joe Adame & Associates, Inc.**  
FULL SERVICE COMMERCIAL & INDUSTRIAL REAL ESTATE

[www.joeadame.com](http://www.joeadame.com)

*For more information please contact:*

**Mark Adame, SIOR, CCIM**

361-880-5888

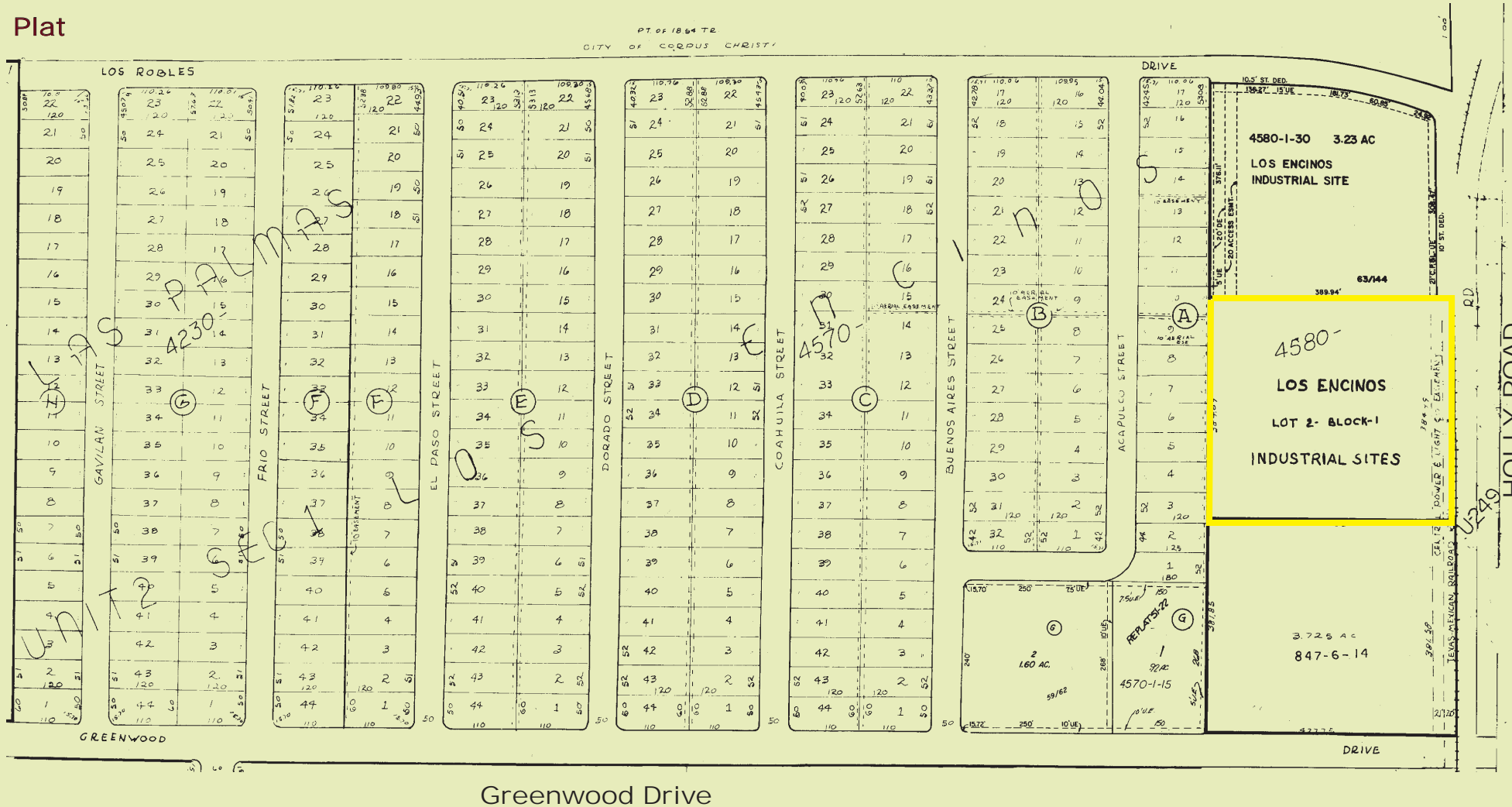
[mark@joeadame.com](mailto:mark@joeadame.com)

4550 Corona Drive, Corpus Christi, Texas 78411 Phone: 361-880-5888 Fax: 361-880-5883 [www.joeadame.com](http://www.joeadame.com)

# FOR SALE

1501 Holly Road, Corpus Christi, TX 78417

Plat



For more information please contact:

**Mark Adame, SIOR, CCIM**  
 361-880-5888  
 mark@joeadame.com



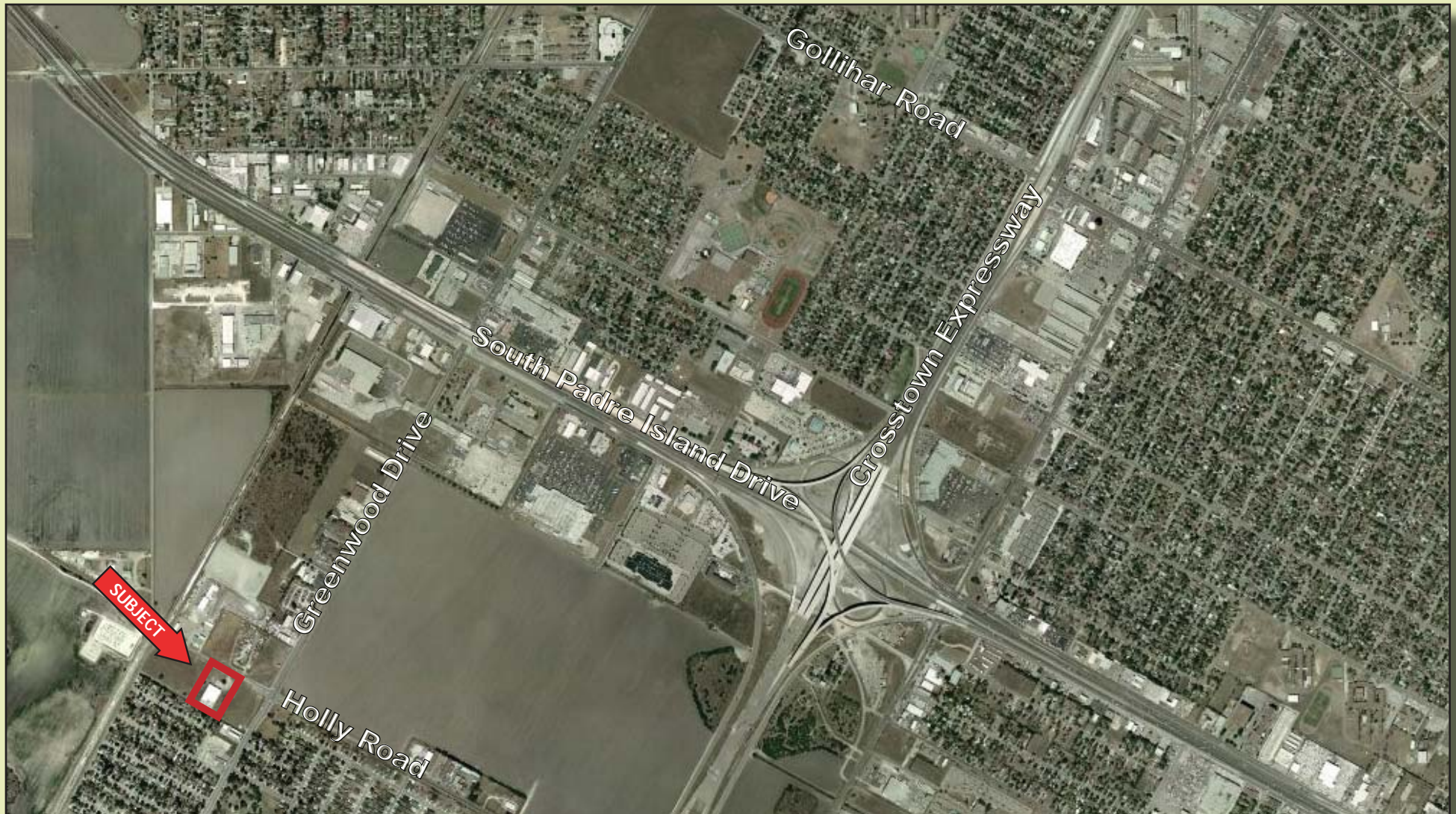
**Joe Adame & Associates, Inc.**  
 FULL SERVICE COMMERCIAL & INDUSTRIAL REAL ESTATE

www.joeadame.com

4550 Corona Drive, Corpus Christi, Texas 78411 Phone: 361-880-5888 Fax: 361-880-5883 www.joeadame.com

FOR SALE

1501 Holly Road, Corpus Christi, TX 78417



**Joe Adame & Associates, Inc.**  
FULL SERVICE COMMERCIAL & INDUSTRIAL REAL ESTATE

[www.joeadame.com](http://www.joeadame.com)

*For more information please contact:*

**Mark Adame, SIOR, CCIM**

361-880-5888

[mark@joeadame.com](mailto:mark@joeadame.com)

4550 Corona Drive, Corpus Christi, Texas 78411 Phone: 361-880-5888 Fax: 361-880-5883 [www.joeadame.com](http://www.joeadame.com)